

IEC 60309 plugs, connectors, receptacles and inlets

Non-hazardous heavy duty industrial

Watertight
NEMA 4X; IP66

5P

Applications:

- Where complete protection against dirt, dust and water jets is required
- In damp or corrosive locations
- In areas prone to vibration, hard use and abuse
- In environments that demand safety, ease of use, reliability and durability
- Ideal for heavy duty industrial applications, such as shipyards, military, marine/marina environments, pulp and paper, heavy manufacturing, wastewater treatment, portable power

Features:

- Voltage, configured, color-coded
- Watertight
- Impact- and corrosion-resistant
- Receptacles mount to Eaton's Crouse-Hinds series back boxes
- Innovative finger lock keeps cord grip secured
- Positive grommet seal system at cord entry
- Funneled wire pockets
- Lockout/tagout
- High grade brass contacts
- VØ insulating material
- Multi-lam sleeve bands

Certifications and compliances:

- IEC 60309-1 and 60309-2
- NEMA 4X
- IEC IP66

20A and 30A:

- Certified to CSA C22.2 No. 182.1 and UL1682

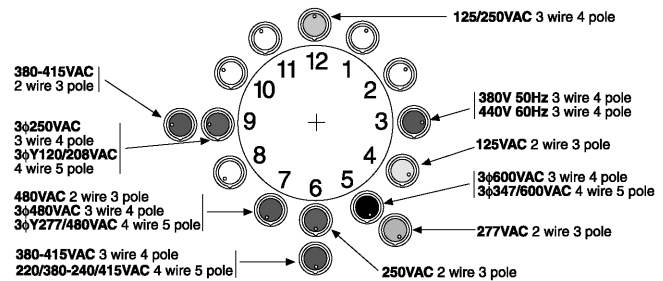


Standard materials:

- Receptacle, plug, inlet and connector housings – Type 12 nylon
- Contact carrier – glass fiber-reinforced nylon 6/6
- Pins and sleeves – brass, nickel-plated
- Multi-lam bands – copper beryllium, nickel-plated
- Assembly screws – stainless steel
- Hinge pin – stainless steel
- Gaskets – silicon

Making a connection is easy:

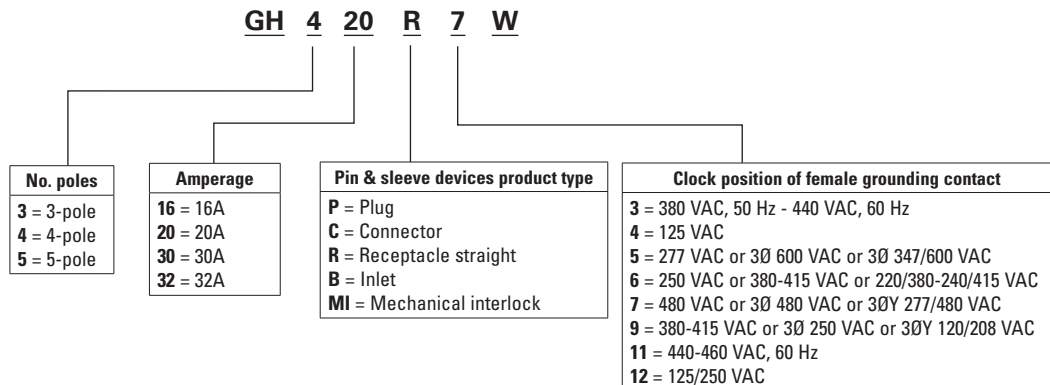
A clock face is used to represent the grounding contact position for all female connectors and receptacles. With the keyway at the bottom, the female grounding contact will appear to one of the twelve hour positions. To identify the system voltage, identify the housing color and hour location of the connector or receptacle grounding contact.



Understanding IEC 60309 pin and sleeve device and mechanical interlock catalog numbers:

Part number example:

GH420R7W



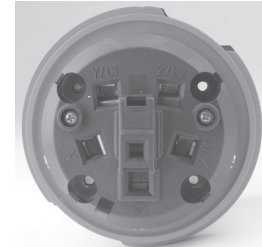
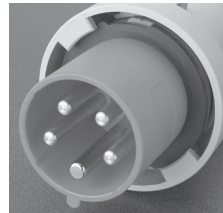
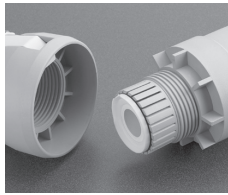
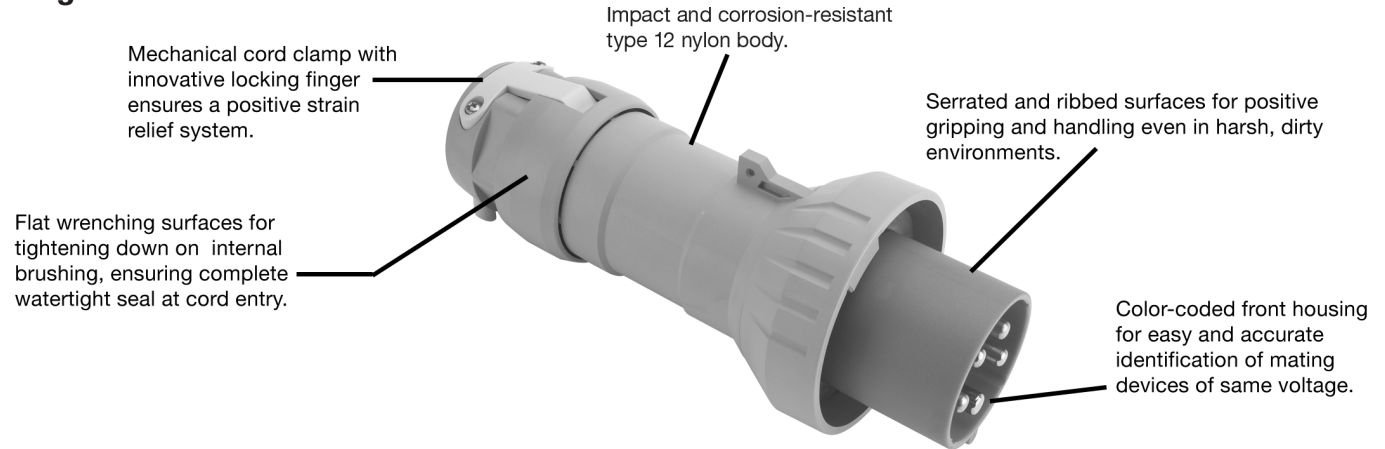
IEC 60309 plugs, connectors, receptacles and inlets

Non-hazardous heavy duty industrial

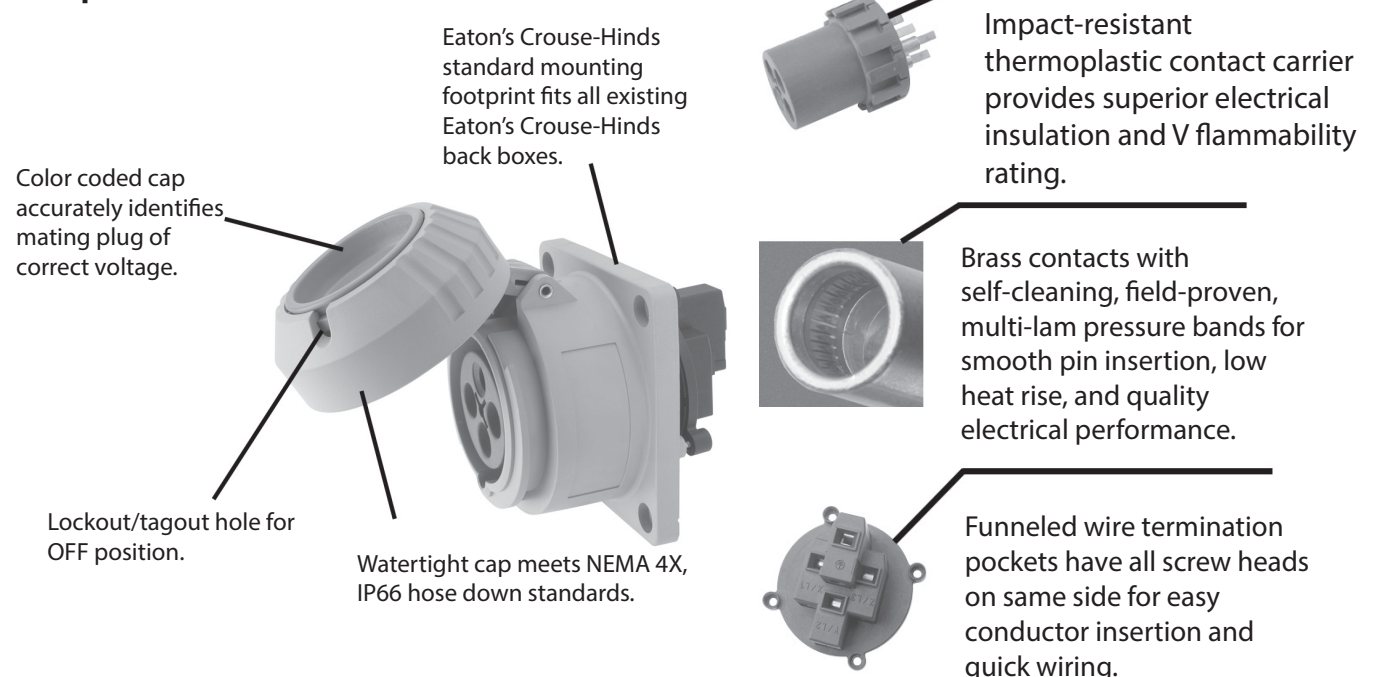
Watertight
NEMA 4X; IP66

5P

Plug



Receptacle



IEC 60309 pin and sleeve mechanical interlocks

Non-hazardous heavy duty industrial

Watertight
NEMA 4X; IP66

5P

Applications:

- To supply power to portable or fixed electrical equipment, such as welders, motor generator sets, compressors, conveyors, portable tools, lighting systems and similar equipment
- In damp, wet or corrosive locations
- In hose down areas

Features:

- Mechanically interlocked, dead front receptacle – plug cannot be engaged or disengaged under load
- Enclosure has continuous form-in-place gasket
- Meets OSHA’s lockout/tagout requirements – can be padlocked in “OFF” position
- Industrial switch is horsepower rated for motor load applications

Certifications and compliances:

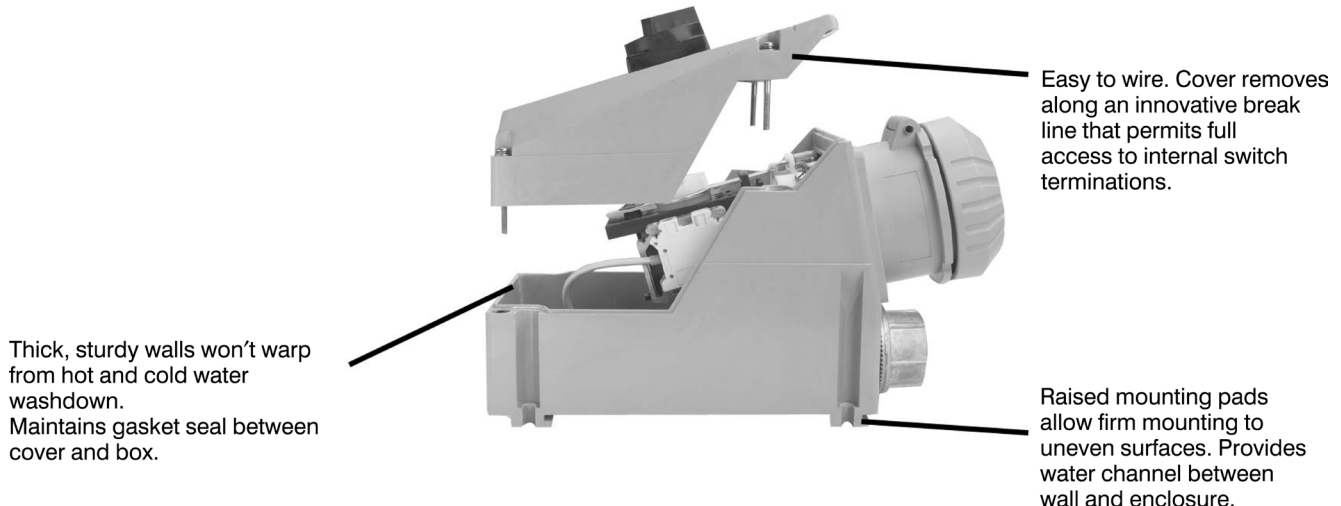
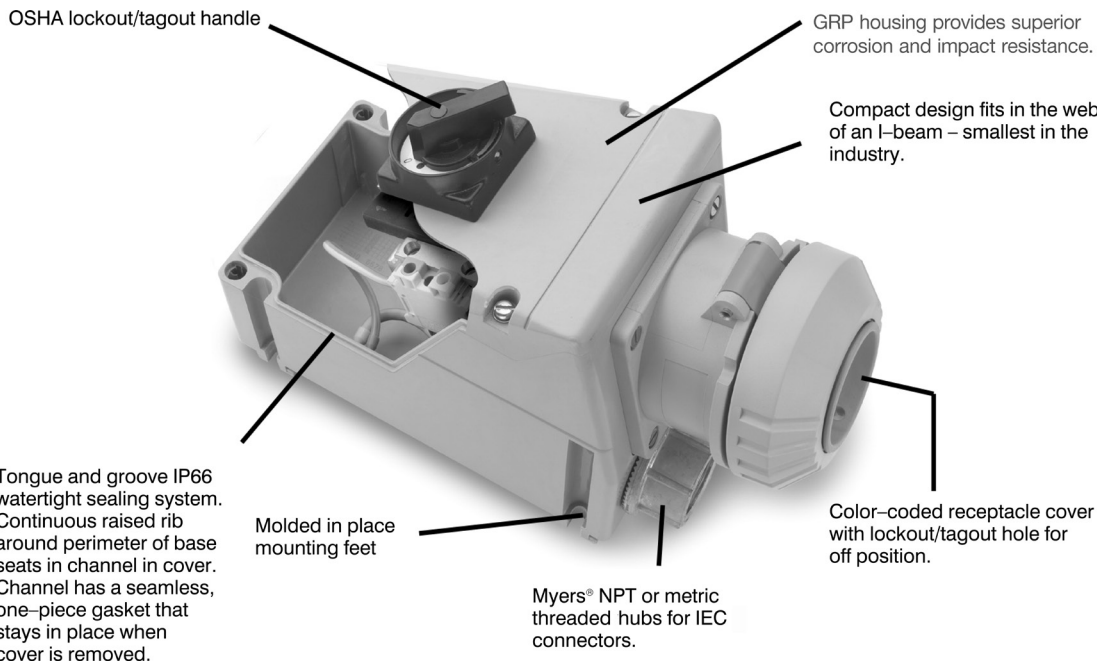
- UL standards: UL508, UL1682
- CSA standard: C22.2 Nos. 14, 182.1
- Enclosure type: 3, 4X, 12
- IP66

Standard materials:

- Enclosure – glass-reinforced polyamide (GRP)
- External hardware – stainless steel
- Contacts – brass, nickel-plated
- Contact carrier – glass fiber-reinforced nylon 6/6

Options:

- | Description | Suffix |
|--|-------------|
| • Auxiliary contacts for PLC or pilot light applications | S483 |



5P

IEC 60309 pin and sleeve mechanical interlocks

Non-hazardous heavy duty industrial

Watertight
NEMA 4X; IP66

5P

Ordering information:

20A and 30A – North America ratings, Series 2
16A and 32A – international ratings, Series 1



Amps	Wires and poles	Configuration		Voltage	Cat. # Receptacle	Cat. # Plug	Cat. # Connector	Cat. # Inlet	Cat. # Interlock unfused	
		Receptacle / connector	Plug / inlet							
16	2W, 3P			110-120	GH316R4W	GH316P4W	GH316C4W	GH316B4W	GH316MI4W ^A	
	2W, 3P			220-240	GH316R6W	GH316P6W	GH316C6W	GH316B6W	GH316MI6W ^A	
	3W, 4P			380-415	GH416R6W	GH416P6W	GH416C6W	GH416B6W	GH416MI6W	
	4W, 5P			220/380 240/415	GH516R6W	GH516P6W	GH516C6W	N/A	GH516MI6W ^A	
20	2W, 3P			125	GH320R4W	GH320P4W	GH320C4W	GH320B4W	GH320MI4W ^A	
	2W, 3P			250	GH320R6W	GH320P6W	GH320C6W	GH320B6W	GH320MI6W ^A	
	2W, 3P			480	GH320R7W	GH320P7W	GH320C7W	GH320B7W	GH320MI7W ^A	
	3W, 4P			125/250	GH420R12W	GH420P12W	GH420C12W	GH420B12W	GH420MI12W	
	3W, 4P			3Ø 250	GH420R9W	GH420P9W	GH420C9W	GH420B9W	GH420MI9W	
	3W, 4P			3Ø 480	GH420R7W	GH420P7W	GH420C7W	GH420B7W	GH420MI7W	
	3W, 4P			3Ø 600	GH420R5W	GH420P5W	GH420C5W	GH420B5W	GH420MI5W	
	4W, 5P			3ØY 120/208	GH520R9W	GH520P9W	GH520C9W	N/A	GH520MI9W ^A	
	4W, 5P			3ØY 277/480	GH520R7W	GH520P7W	GH520C7W	N/A	GH520MI7W ^A	
	4W, 5P			3ØY 347/600	GH520R5W	GH520P5W	GH520C5W	N/A	GH520MI5W ^A	
	30	2W, 3P			125	GH330R4W	GH330P4W	GH330C4W	GH330B4W	GH330MI4W
		2W, 3P			250	GH330R6W	GH330P6W	GH330C6W	GH330B6W	GH330MI6W
2W, 3P				480	GH330R7W	GH330P7W	GH330C7W	GH330B7W	GH330MI7W	
3W, 4P				125/250	GH430R12W	GH430P12W	GH430C12W	GH430B12W	GH430MI12W	
3W, 4P				3Ø 250	GH430R9W	GH430P9W	GH430C9W	GH430B9W	GH430MI9W	
3W, 4P				3Ø 480	GH430R7W	GH430P7W	GH430C7W	GH430B7W	GH430MI7W	
3W, 4P				3Ø 600	GH430R5W	GH430P5W	GH430C5W	GH430B5W	GH430MI5W	
4W, 5P				3ØY 120/208	GH530R9W	GH530P9W	GH530C9W	N/A	GH530MI9W	
4W, 5P				3ØY 277/480	GH530R7W	GH530P7W	GH530C7W	N/A	GH530MI7W	
4W, 5P				3ØY 347/600	GH530R5W	GH530P5W	GH530C5W	N/A	GH530MI5W	
32		2W, 3P			110-120	GH332R4W	GH332P4W	GH332C4W	GH332B4W	GH332MI4W
		2W, 3P			220-240	GH332R6W	GH332P6W	GH332C6W	GH332B6W	GH332MI6W
	3W, 4P			380-415	GH432R6W	GH432P6W	GH432C6W	GH432B6W	GH432MI6W	
	4W, 5P			220/380	GH532R6W	GH532P6W	GH532C6W	N/A	GH532MI6W	

^A Alternate switch design. Does not have a switch handle. Switch is activated by inserting plug: rotating plug to turn switch "ON."

Non-hazardous heavy duty industrial For 20A, 30A, 60A and 100A IEC 60309 receptacles and inlets

Angled back box adapters install IEC 60309 receptacles or inlets to existing back boxes at a 15° angle, eliminating plug cord stress and maximizing wiring capacity.

Designed with a square footprint, the angled back box adapter allows the conduit openings to be positioned vertically or horizontally.

Features:

- Square footprint on adapter allows back box conduit openings to be positioned vertically or horizontally
- 15° angle eliminates cord stress on attached plug
- Heavy duty cast aluminum back boxes are ideal for abusive environments
- Epoxy powder coat finish available for additional corrosion resistance
- Stainless steel hardware
- Quick and easy to install
- Neoprene gasket provided between adapter and back box for additional weather resistance

Angled adapters install directly onto existing Eaton's Crouse-Hinds series back boxes



20/30A



60A



100A

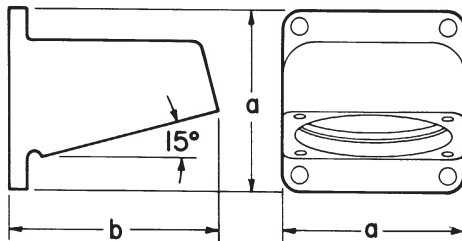
Ordering information:

Amperage rating of receptacle or inlet	Cat. # Angled adapter	Cat. # Mating square back box
20	AR30	ARRH/ARRC 13, 23, 33
30	AR30	ARRH/ARRC 13, 23, 33
60	AR601	ARRH/ARRC 36, 46, 56
100	AR100	AJ/AJC 46, 56

Adapter extensions (ordered separately): Required for 30A and 60A angled back box adapters

Amperage	Cat. # Adapter extension
30	GHG5201901R0002
60	GHG5201901R0001

Dimensions (in inches):



Cat. #	A	B	Receptacle / inlet footprint
AR30	3.40	3.90	2.74 x 2.74
AR601	4.30	4.90	3.03 x 3.34
AR100	5.90	6.20	4.09 x 4.09

Non-hazardous heavy duty industrial For 20A, 30A, 60A and 100A IEC 60309 receptacles and inlets

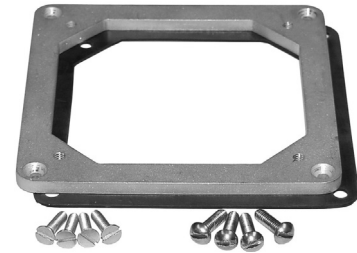
H-Series adapter plates permit an Eaton's Crouse-Hinds series IEC 60309 receptacle or inlet to be mounted to back boxes of other manufacturers. Please ask your sales representative for further assistance.

Features:

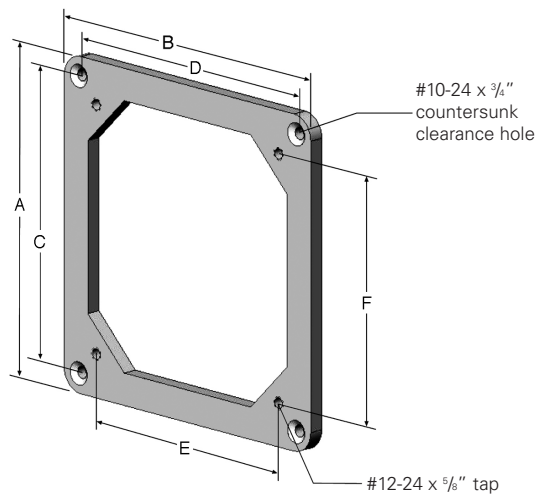
- Heavy duty aluminum plate fits directly to the Hubbell footprint
- Adapter plate is engineered to be used with the gasket that is provided with the Eaton's Crouse-Hinds series receptacle or inlet
- Provided gasket maintains watertight integrity between adapter plate and back box
- Stainless steel hardware provided for attaching adapter plate to back box and receptacle or inlet to adapter plate
- Corrosion-resistant
- Quick and easy to install

Ordering information:

Amperage rating of Eaton's Crouse-Hinds series receptacle or inlet	Cat. # Hubbell back box	Cat. # Adapter plate
20/30	BB201W/BB301W	CHAP30H
60	BB601W/BB602W	CHAP60H
100	BB1001W/BB1002W	CHAP100H



Dimensions (in inches):



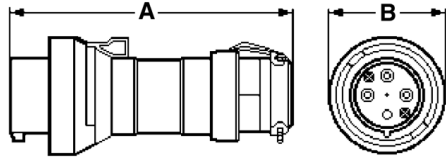
Cat. #	Overall size		Hubbell footprint		Eaton's Crouse-Hinds series footprint	
	A	B	C	D	E	F
CHAP30H	4.03	3.78	3.13	3.13	2.74	2.74
CHAP60H	4.53	4.53	3.88	3.88	3.03	3.35
CHAP100H	5.53	5.53	4.88	4.88	4.09	4.09



Non-hazardous heavy duty industrial

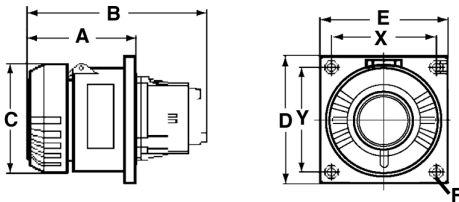
Dimensions (in inches):

Plug



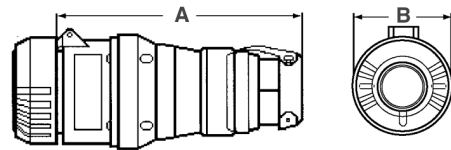
Amperage	A	B	Cord range		
			3-pole	4-pole	5-pole
20/16	7.37	3.00	0.315 - 0.748"	0.315 - 0.748"	0.472 - 0.827"
30/32	7.37	3.00	0.314 - 0.748"	0.315 - 0.748"	0.472 - 0.827"

Receptacle



Amperage	A	B	C	D	E	F (dia.)	MTC. X	Dims. Y
20/16	2.95	4.37	3.31	3.38	3.38	0.236	2.74	2.74
30/32	3.35	4.92	3.74	3.38	3.38	0.236	2.74	2.74

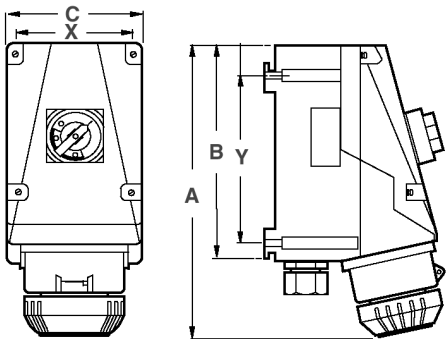
Connector



Amperage	A	B	Cord range		
			3-pole	4-pole	5-pole
20/16	8.58	3.38	0.315 - 0.748"	0.315 - 0.827"	0.472 - 0.827"
30/32	10.40	3.82	0.315 - 0.748"	0.315 - 0.827"	0.472 - 0.827"

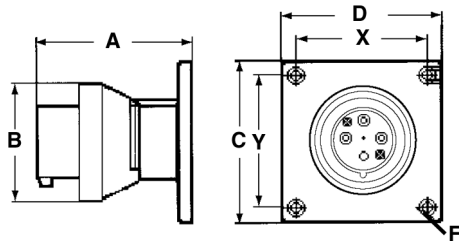
5P

Interlock



Amperage	A	B	C	X	Y	20A, 30A hub	16A, 32A cable gland
20/16 ^A	8.80	6.70	3.50	3.70	4.50	1/2"	M20
20/16	9.30	6.90	4.30	3.90	5.30	3/4"	M25
30/32	11.20	8.07	4.70	4.30	6.70	1"	M32

Inlet



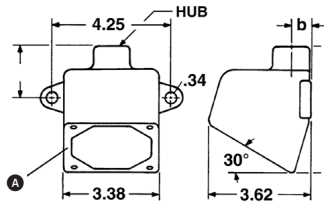
Amperage	A	B	C	D	F (dia.)	MTC. X	Dims. Y
20/16	3.27	3.02	3.38	3.38	0.236	2.74	2.74
30/32	4.26	3.75	3.38	3.38	0.236	2.74	2.74

^A3-pole only.

Non-hazardous heavy duty industrial

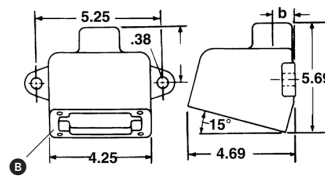
Ordering information and dimensions (in inches) – back boxes:

20A and 30A cast aluminum back boxes



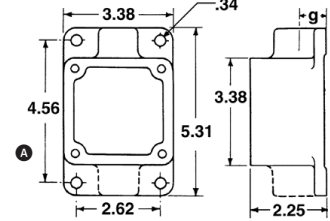
Cat. #	Hub size	A	B
ARE13	1/2"	1.84	0.69
ARE23	3/4"	1.84	0.81
ARE33	1"	1.97	0.94

60A and 63A cast aluminum back boxes



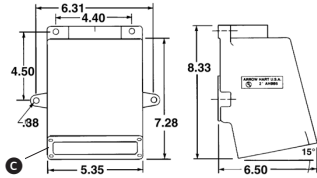
Cat. #	Hub size	A	B
ARE36	1"	2.56	0.69
ARE46	1 1/4"	2.62	1.19
ARE56	1 1/2"	2.69	1.31

16A, 20A, 30A and 32A cast aluminum back boxes



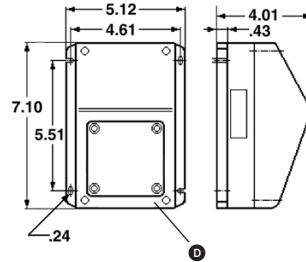
Cat. #	Hub size	Hub config.	G
ARRH13	1/2"	Dead end	0.69
ARRH23	3/4"	Dead end	0.81
ARRH33	1"	Dead end	0.94
ARRC13	1/2"	Through feed	0.69
ARRC23	3/4"	Through feed	0.81
ARRD33	1"	Through feed	0.94

100A and 125A cast aluminum back box



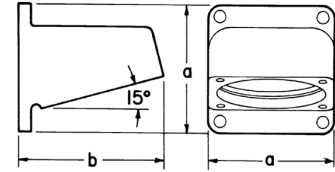
Cat. #	Type
CHBB1	100A and 125A cast aluminum

30A non-metallic back box



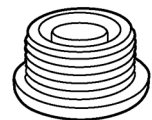
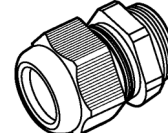
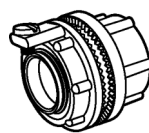
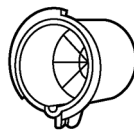
Cat. #	Type
CHBB2	30A non-metallic

Cast aluminum fits ARRH and ARRC 30A angle adapter



Cat. #	A	B
AR30	3.38	4.12

Ordering information – accessories:



Amperage	No. of poles	Cat. # Plug closure cap	Cat. # Enclosure Myers hub	Cat. # Enclosure cable gland	Cat. # Enclosure closure plug
20/16	3-pole	CHCC320	STM 1	CHCG20	CHCP20
	4-pole	CHCC420	STM 2	CHCG25	CHCP25
	5-pole	CHCC520			
30/32	3-pole	CHCC3430	STM 3	CHCG40	CHCG40
	4-pole				
	5-pole				
60/63	3-pole	CHCC60	STM 4	CHCG50	CHCP50
	4-pole				
	5-pole				
100/125	3-pole	CHCC100	STM 5	CHCG63	CHCP63
	4-pole				
	5-pole				

- A Footprint: 2.74 x 2.74.
- B Footprint: 5.40 x 2.74.
- C Footprint: 4.09 x 4.09.
- D Footprint: 2.74 x 2.74 (not UL Listed).